



Diocesan Emergency Plan

Diocesan Clericus

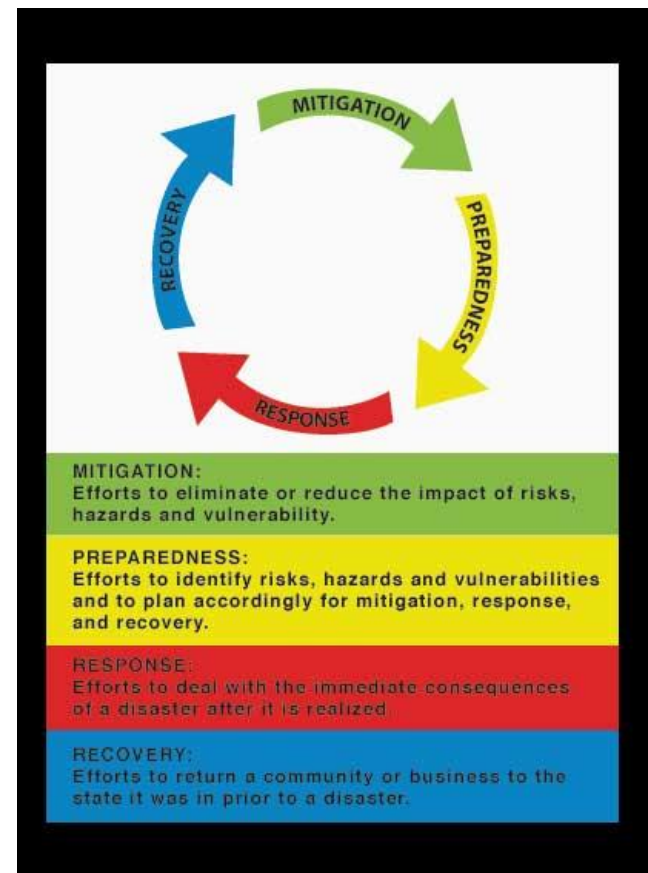
24 March 2015

Background

- Effort started under Bishop Howe in 2010
- Committee established to write emergency plan for the diocese
- Draft plan languished during transition
- Joplin tornado
- Restarted last Spring

Multilevel approach to emergency planning

- Diocesan preparedness
- Deanery preparedness
- Congregation preparedness
- Household preparedness

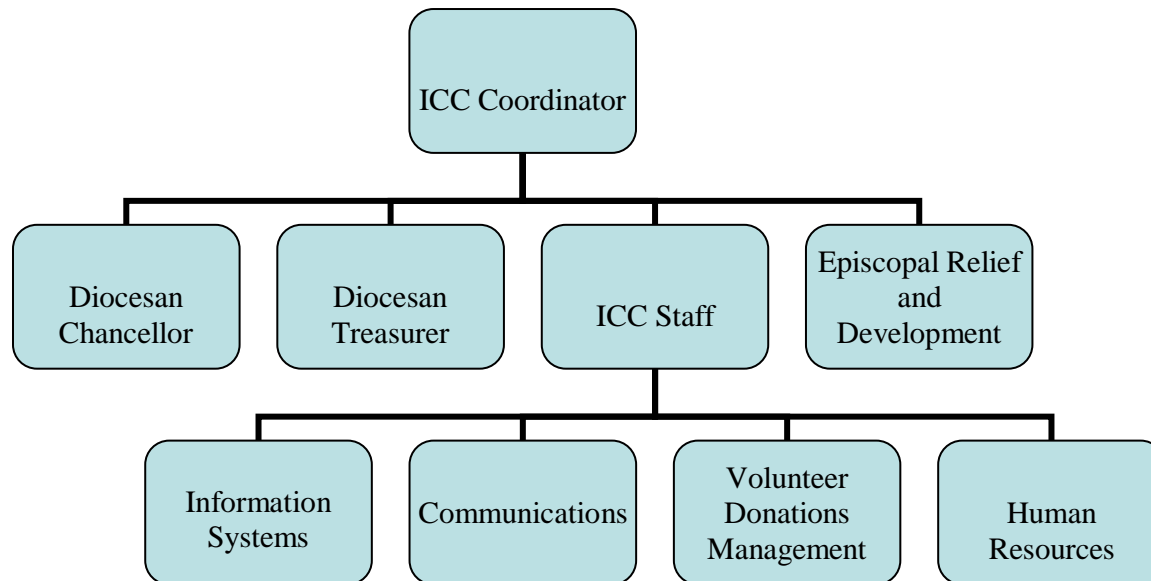


Diocesan Preparedness

- Establishes diocesan-wide structure for coordinated response to local emergencies
- Emergency planning committee
 - The Rev. Bryan England
 - The Rev. David Lynch
 - Ms. Anne Meredith Kyle
 - Mr. Gary Allman
 - One representative from each deanery
 - May be expanded as needed

Diocesan Preparedness (cont.)

- Establishes an Incident Command Center to coordinate diocesan response to emergencies



Diocesan Preparedness (cont.)

- Coordinates training of congregational emergency coordinators and development of congregational emergency plans
- Consolidated purchasing of AEDs and other emergency equipment for congregations
- Exercises the diocesan plan
- Modifies the plan as necessary (a living document)

Deanery Preparedness

- Deanery representatives on Emergency Planning Committee
- Coordinates emergency planning within congregations in the deanery
- Acts as diocesan emergency point of contact for the deanery

Congregation Preparedness

- Each congregation/agency appoints an emergency planner
- Each congregation develops and exercises its own emergency plan considering unique threat assessments and responses
- Encourages household emergency preparedness

Household Preparedness

- All levels of diocese encourage household emergency preparedness
- Provide tools and templates for households to follow



Next Steps

- Emergency planning article in *Spirit*
- Deaneries nominate emergency planners
- Training of congregational planners
- Introduction of plan at diocesan convention
- Congregations develop unique emergency plans
- Diocesan plan is tested and plan revised accordingly.