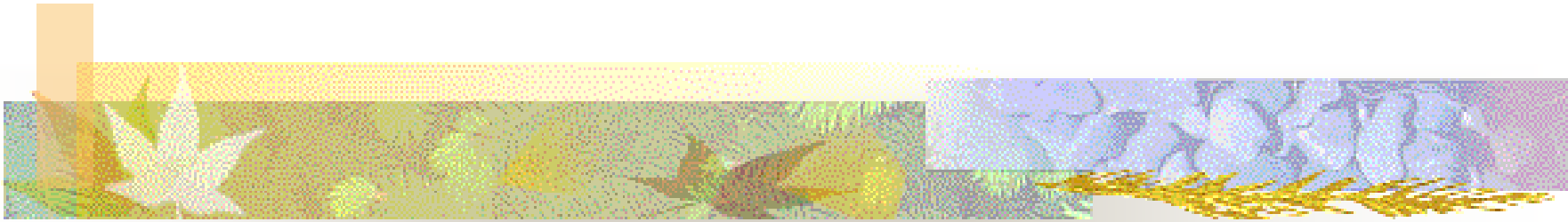


THE EMERGENCY PREPARED CHURCH



A VITAL MINISTRY FOR THE
BODY OF CHRIST

Joplin Tornado

May 22, 2011 5:34–6:12 pm

158 fatalities, 1,150 injuries

25% of Joplin was destroyed, with roughly 2,000 buildings destroyed



Destroyed area in the tornado's damage path.



Catastrophic damage in Joplin, Missouri following an EF-5 tornado





What is an Emergency Prepared Church?

- Being Prepared to Manage Emergencies that can happen in your parish:
 - Fire
 - Medical Emergencies
 - Intrusion and abduction

- Managing a Facility Evacuation in an orderly manner to a safe location outside the church building

- Being Prepared to serve as a Resource to your Community in time of disaster and regional emergencies



MAKING YOUR CHURCH SAFE FOR ALL PARISHONERS AND VISITORS

- Developing Plans for managing:
 - Fire
 - Medical Emergency
 - Severe Weather / Sheltering in Place
 - Building and People Safety
- Developing an Evacuation Plan for all floor levels and individual rooms



MAKING YOUR CHURCH A RESOURCE FOR THE COMMUNITY

- Serving as a ministry to your community includes making the church building a resource in time of need.
 - Shelter in time of natural or man-made disasters
 - Command Post and Shelter for Public Safety Personnel
 - Distribution Center for needed community supplies



HOW TO DO THIS IN YOUR COMMUNITY

- Partner with local and regional agencies:
 - Local EMS, Fire and Police departments
 - County Emergency Management Organizations and Health Departments
 - Local Chapters of the American Red Cross (ARC), Salvation Army, and Missions
 - Church Insurance Providers



Developing Resources to Get Started

- Don't Re-invent the Wheel
 - Find and learn from other churches that have done this already
 - Search the Internet
 - Ask advice from your local Fire Dept. and County Emergency Management Agency
 - Visit the local American Red Cross office



MANAGEMENT BY COMMITTEE?

- This is important enough for Vestry attention
 - Vestry to assign a working group
 - Start small, address what is reasonable for your parish
 - Address the immediate needs for dealing with: Fire, Severe Weather, Medical Emergencies, Intruders and Evacuation Plans



Authority for Program Management

- This is an ongoing commitment by church staff and volunteers (Ministry)
 - Who's in charge?
 - Who gets trained?
 - Must be supported by the Priest and church administration
 - Who calls 911?
 - Who attends to the parishioner who collapses during the church service?
 - Who escorts the children out of the church during a fire evacuation? Etc....



THE EMERGENCY PREPARED CHURCH

- Who's in charge?
 - Parish Administrator, Head Usher, Appointee from the Vestry?
 - There must be someone or a group that takes responsibility for making sure that the program is managed and people are prepared to carry out their ministry
 - Its all about assuring safety for all parishioners and visitors



THE EMERGENCY PREPARED CHURCH

- Who's in charge?
 - This ministry requires trained people to be ready and willing to act in time of need
 - An organized team approach is most often the best way to assure that people are at the ready during all church functions



THE EMERGENCY PREPARED CHURCH

- Who should be trained
 - Parish staff, Ushers, Acolytes and the general parish community all have an obligation to be trained at various levels
 - Recommend starting with Staff and Ushers to address immediate needs in the parish during routine and scheduled functions
 - Recommend a plan to offer and provide training to the congregation in CPR, AED and use of a Fire Extinguisher



THE EMERGENCY PREPARED CHURCH

- How should training be conducted?
 - Identify who the key responsible people are in your parish
 - Train them to manage the basic aspects of calling for help (911), evacuating and caring for the injured or ill prior to the arrival of emergency personnel.

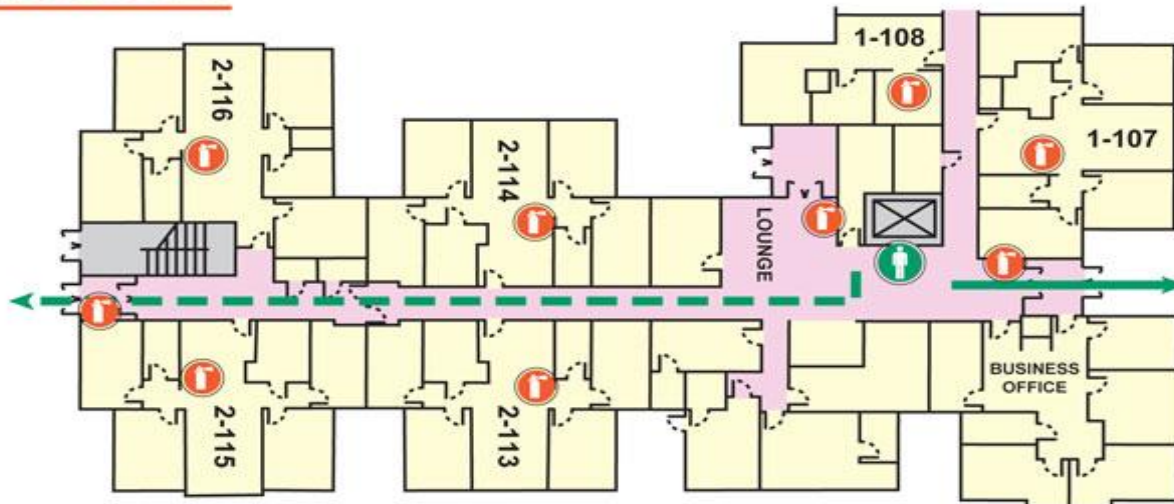


THE EMERGENCY PREPARED CHURCH

- Develop a roster and calling list
 - Professionals in your parish:
 - Doctors, Nurses, EMTs, Fire Fighters, etc...
- Publish the plan
 - Create a plan and publish it to the Vestry, and parish community. Keep it up-to-date and on file
- Post evacuation maps in strategic locations
 - Get assistance from your local fire and police departments

Glassboro Student Housing
EMERGENCY PROCEDURES

Evacuation Plan Floor 1



LEGEND

	YOU ARE HERE		FIRE ALARM PULL-BOX
	FIRE EXTINGUISHER		EXIT STAIRWAY
	PRIMARY EVACUATION ROUTE		SECONDARY EVACUATION ROUTE

www.safetymap.com 2009



**IN CASE OF EMERGENCY DO NOT USE ELEVATORS - USE EXIT STAIRWAYS
HORN WILL SOUND - STROBES WILL FLASH
FIRE DEPT. EMERGENCY TELEPHONE NUMBER - CALL 911**



THE EMERGENCY PREPARED CHURCH

- Have fire officials assist in evaluating your fire preparedness systems, alarms and alerting systems
- Have your sextons develop and maintain a fire extinguisher inspection table, and table for testing and evaluating emergency lighting, and other emergency equipment in the church
- Make sure all exits are clearly marked and lighted
- Provide and conduct awareness training for safety and how to manage intruders



THE EMERGENCY PREPARED CHURCH

- How should training begin?
 - Identify and prepare key staff who are responsible during church operations (office staff, clergy, ushers, acolytes, sextons, etc.)
 - Schedule CPR/AED classes that are open to all parishioners
 - Conduct fire drills and evacuation as part of a worship service



THE EMERGENCY PREPARED CHURCH

- What kind of training is appropriate for both staff and parishioners?
 - Cardio-Pulmonary Resuscitation (CPR) and Automated External Defibrillation (AED)
 - First Aid
 - Fire Extinguisher Training
 - Awareness training for the congregation and public



THE EMERGENCY PREPARED CHURCH

- Where to access training resources
 - Local American Heart Association and American Red Cross for first aid, CPR and AED training
 - Local Fire and EMS agencies for fire extinguisher training, CPR and AED training
 - Local Law Enforcement for managing bomb threats, intruder and abductor threats, and active shooter
 - Parishioners who are qualified medical personnel that can provide immediate response to care for the sick and injured prior to emergency service arrival



THE EMERGENCY PREPARED CHURCH

Risk Assessments

- Fire inspection / knox box
- Data maintenance and recovery
 - Back up systems-off site locations
- Pre-plans for continuity of operations
 - Alternative meeting sites (cooperatives)



Your Church as a Resource to the Community

- Engage Red Cross Services
 - Provide Emergency Shelter
 - Serve as a Public Safety Command Post
 - Provide Food Services
 - Provide Temporary Housing
 - Professional Services: Pastoral Care



Your Church as a Resource to the Community

Providing Emergency Shelter

- Providing shelter for protection from severe storms, and during times of disaster
 - Invest in a weather radio and place it where it will get heard (often free)
- Safe haven for neighborhood youth and adults



Your Church as a Resource to the Community

Resource for Public Safety Activity

- Temporary command post for neighborhood disaster events, fires, floods, etc.
 - Variable size meeting rooms
- Staging area for emergency services:
 - Parking lots, and grounds



Your Church as a Resource to the Community

Temporary Food Services

- Churches with kitchens and dining spaces can temporarily prepare and feed large groups of people during times of emergency
- Most churches could accommodate portable kitchens and provide space to feed large groups of people over time



Your Church as a Resource to the Community

Temporary Housing

- Church facilities with spaces to accommodate cots and temporary bedding
- Churches with lavatory facilities



Your Church as a Resource to the Community

Professional Services

- Pastoral counseling
- Psychiatric counseling
- Emotional counseling
- Critical Incident Debriefing
- Physician consultation



THE EMERGENCY PREPARED CHURCH

IN SUMMARY



THE EMERGENCY PREPARED CHURCH

- Emergency Planning does not have to be difficult and daunting
- Being an Emergency Prepared Church can be a goal for churches of any size with minimal resources



THE EMERGENCY PREPARED CHURCH

Church Mission

- Church facilities must be safe for all who enter them.
- Being prepared to protect parishioners and being a service to community is a shared ongoing ministry.